

Surgicare of Central Jersey Inc.

Watchung, NJ

Ambulatory Surgery Center

- 11,000 SF fit-up of existing first floor for a self contained, comprehensive surgery center for emergency and scheduled procedures
- Alteration of structure below grade to accommodate new mechanical equipment and uninterruptible power supply generator
- Hydronic heating system with steam humidification and integrated heat recovery system
- New plumbing and fire sprinkler systems tied to existing services
- Specialties including sterilizers, scrub stations, medi-prep, nourishment station, ultrasonic cleaner and medical gases



Surgicare of Central Jersey

Union Carbide Corporation Building #72 - "Trauma Center"

Bound Brook, NJ

- 6,000 sf renovation and addition to existing space for use as a new medical department
- Demolition of existing finished office space including selective floor slab removals for 250 lineal feet of under floor piping and wireway
- Complete new systems for plumbing, fire sprinklers, electric service, electrical distribution, and lighting
- Conversion of existing HVAC to high-efficiency, variable air volume system with new steam-to-water heating equipment, new air handling equipment, new fin tube radiation, and new refrigeration condenser
- Specialties including: x-ray facility, medical gases, and lab furniture

Saint Clare's Hospital Emergency Room

Sussex, NJ



St. Clare's Emergency Room

The complete lower level of the building was meticulously altered structurally and reconstructed to support the ongoing operations of the existing emergency room. At completion and acceptance from the DOH, emergency room operations seamlessly shifted to the new location.

The new addition and renovations for the new emergency room include:

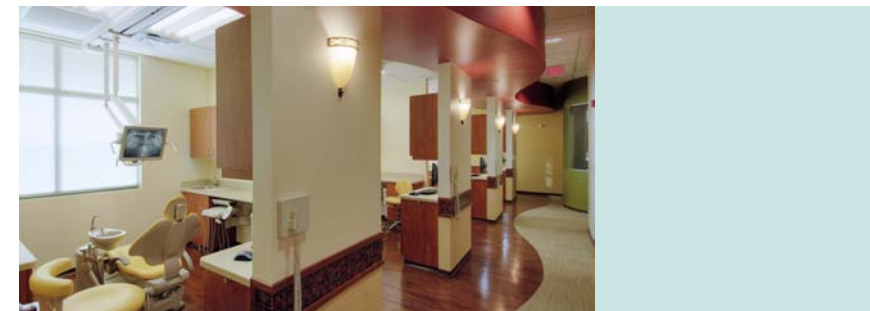
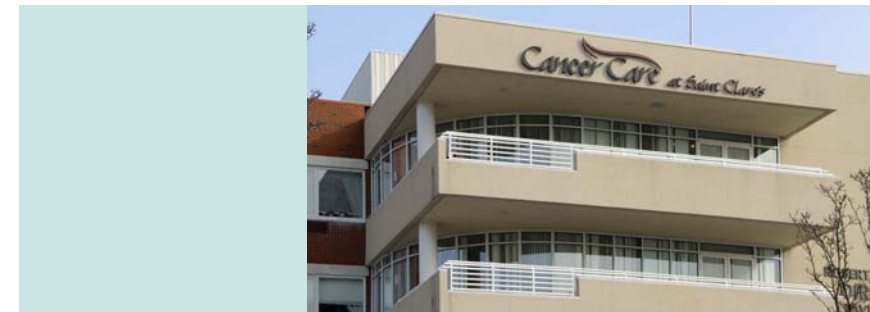
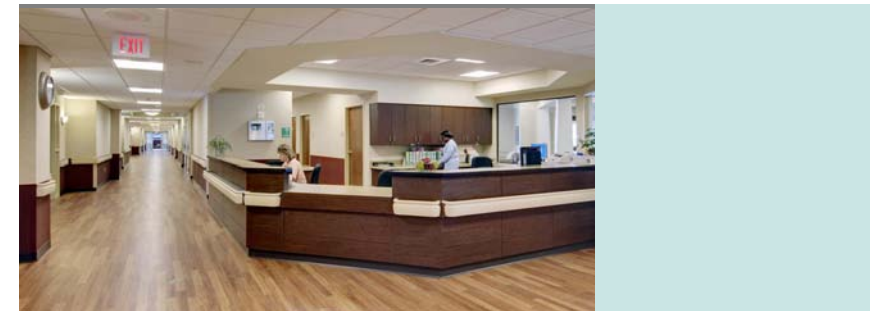
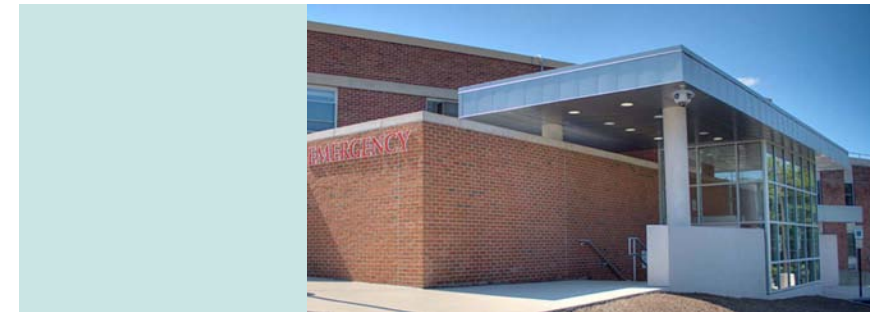
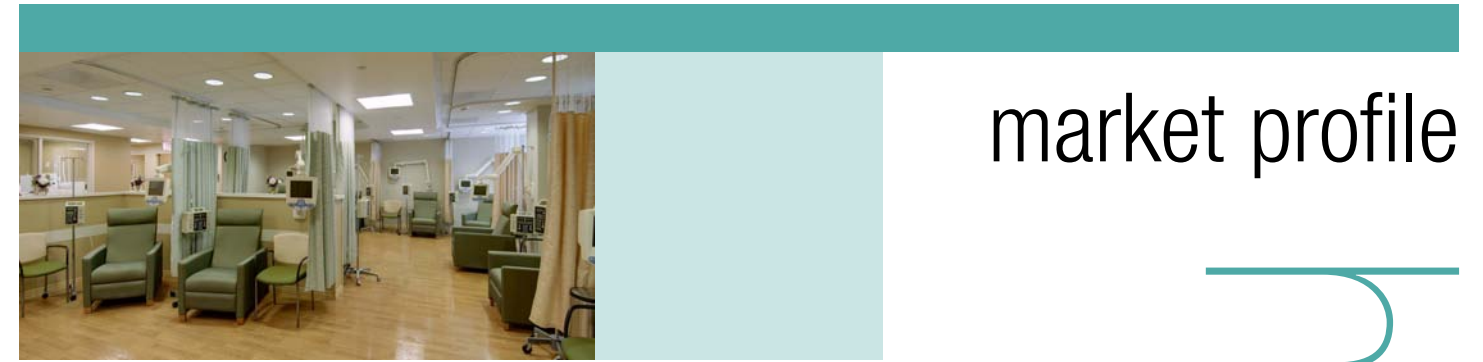
- Two trauma rooms
- Four exam bays
- Decontamination room
- Nurse's station
- Reception area
- Waiting room
- Staff lounge & rest room
- Atrium and lobby addition
- Ambulatory unloading & site improvements



St. Clare's Emergency Room

market profile

healthcare



Saint Clare's Oncology Suite

Denville, NJ



St. Clare's Oncology Suite

Our second project for Saint Clare's Hospital located at the Skilled Nursing Facility in Denville is a 6,350 sf renovation for a new oncology suite. Improvements included:

- Exam rooms
- Nurse's station
- Reception area
- Waiting area
- Infusion area
- Administrative offices
- Conference room
- Staff lounge & restrooms



St. Clare's Oncology Suite

"As Director of Facilities Development for Saint Clares Health System, I would like to thank you for your involvement in the past two construction projects here at Saint Clares. Both the Sussex ED renovation and the Denville Medical Oncology project went very smoothly and were completed within the anticipated schedule. I am appreciative of the oversight you provided and your strong commitment and responsiveness."

Additionally, your extensive experience and knowledge base proved to be a vital asset in overcoming numerous challenges that these projects presented.

I look forward to working with you again."

Stefan Rossi
Director of Facilities Development
Saint Clare's Health System

Senior Care & Activities Center

Montclair, NJ



Senior Care & Activities Center

The center provides day care services for frail elderly and Alzheimer patients. The 16,500 sf building combines pitched and flat roofs using masonry, wood and steel construction. It features a music area, arts & crafts room, counseling area, exercise room, dining area, quiet rooms, TV/computer area, hair dresser, kitchen, and an inner courtyard.

Metropolitan Plastic Surgery Group

Hackensack, NJ



Metropolitan Plastic Surgery Group

Additions and alterations for medical office facilities to construct a fully certified, licensed Ambulatory Surgery Center.

The primary challenge of this project was the limitation of only a three-week shut down of the existing facility operations to complete major demolitions, excavations and structural alterations. This was accomplished and the remaining work was completed with normal operations ongoing.

- Excavation of layered red shale from beneath the existing building to create a basement with 6,000 sf of new finished space
- Extensive selective demolitions of structural elements requiring coordinated and phased temporary shoring and protections
- Addition of new entryway featuring a skylit three level stairway with glass and stainless steel railings and a two-stop elevator
- Specialties including; sterilizers, ultrasonic cleaner, medi-prep and nourishment units, medical gases and electrical generator
- Two operating rooms and recovery room

Barn Hill Care Center

Newton, NJ



Barn Hill Care Center

This project comprised a major 18,000 sf expansion and renovations to the Barn Hill Care Center health care facility, located on Route 94 in Newton, NJ.

Barn Hill Care Center offers health care services for short stays or extended medical and rehabilitative care. The expansion and improvements included:

- Accommodations for 24 additional beds
- Three activity lounges
- Dining room
- Rehabilitation room
- Nurse's station
- Reception area & rest rooms
- New elevator within the existing building

Site development included an underground storm water detention/recharge system, a landscaped courtyard, expanded parking, a series of modular block retaining walls and a large quantity of earth fill to meet the required ground elevations.



Barn Hill Care Center

Dr. Gary Edeer Dental Office

Wayne, NJ



This 2,000 sf state-of-the-art dentistry office was completed for Dr. Gary Edeer, DDS, and is located in the Hamburg Commons Professional Building in Wayne, NJ. It features five exam/procedure rooms for Dr. Edeer's general and cosmetic dentistry practice.



Dr. Edeer Dental Office

Skylands Medical Group

Landing, NJ

Our second project in 10 years for SMG, this expansion/renovation included a new 6,525 sf, two-story, wood frame addition that required careful coordination and phasing of the construction that took place around two sides of the existing medical offices, which remained in operation throughout the project. The addition included:

- Ten new exam rooms
- Three staff lounges
- Three consultation rooms
- Two private offices
- General office
- Procedure room
- Seven bathrooms
- New entrance lobby with elevator



Skylands Medical Group